

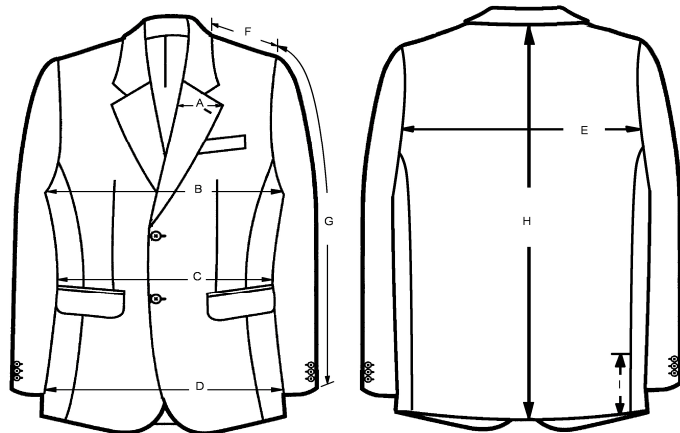
# Harris Tweed

Woven by hand in the Western Isles of Scotland

Barva | Dalmore | Taransay | Laxdale

12th March 2008

REGULAR GARMENT MEASURED		38	40	42	44	46	48	50
MEASUREMENTS ON THE CIRCULAR IN CMS								
<b>A</b>	LAPEL WIDTH	8	8	8	8.5	8.5	8.5	8.5
<b>B</b>	CHEST ( AT UNDERARM )	110	115	120	125	130	135	140
<b>C</b>	WAIST ( 20.5CM BELOW ARMHOLE )	103	108	113	118	123	128	133
<b>D</b>	SEAT 38CMS BELOW UNDERARM )	112	117	122	127	132	137	142
<b>E</b>	CROSS BACK ( 13CMS BELOW CBN )	47.4	48.5	49.6	50.7	51.8	52.9	54
<b>F</b>	SHOULDER SEAM	16.4	16.7	17	17.3	17.6	17.9	18.2
<b>G</b>	OVERARM ( CROWN TO CUFF ) - SHORT	59.5	60.5	61	61.5	62		
<b>G</b>	OVERARM ( CROWN TO CUFF ) - REGULAR	62	63	63.5	64	64.5	65	65.5
<b>G</b>	OVERARM ( CROWN TO CUFF ) - LONG		65.5	66	66.5	67		
<b>H</b>	CB LENGTH ( CB NP - HEM ) - SHORT	75	76	77	78	79		
<b>H</b>	CB LENGTH ( CB NP - HEM ) - REGULAR	77.5	78.5	79.5	80.5	81.5	82.5	83
<b>H</b>	CB LENGTH ( CB NP - HEM ) - LONG		81.5	82.5	83.5	84.5		
<b>I</b>	VENT LENGTH - SHORT	22.5	22.5	22.5	22.5	22.5		
<b>I</b>	VENT LENGTH - REGULAR	23.5	23.5	23.5	23.5	23.5	23.5	23.5
<b>I</b>	VENT LENGTH - LONG		24.5	24.5	24.5	24.5		



## CONVERSION OF UK SIZES TO EUROPEAN

REGULAR	ENGLISH	38R	40R	42R	44R
	EUROPEAN	48R	50R	52/54R	54/56R
	ENGLISH	46R	48R	50R	
	EUROPEAN	58R	60R	62R	

LONG	ENGLISH	40L	42L	44L	46L
	EUROPEAN	50L	52/54L	54/56L	58L

SHORT	ENGLISH	38S	40S	42S	44S
	EUROPEAN	48S	50S	52/54S	54/56S
		46S			
		58S			